

POS 600 Series Customer Display Installation Guide



Part no. 48200980
September 2002 (V1.0)

1. Accessory



Pole Display Module



Flat Cable (RJ-45 to DB-9F flat cable onnector)



22cm pole support



9cm pole support



Pole Display cover kit

2. Specification

2.1 VFD type

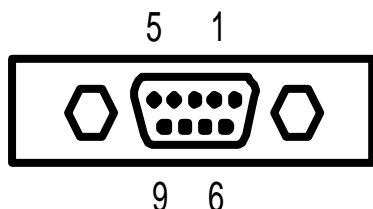
ITEM	DESCRIPTIONS
Display method	Vacuum fluorescent display
Number of character	40 characters (20 columns x 2 lines)
Character font	5 x 7 Dot matrix
Display color	Blue green
Brightness	700 cd/m ²
Character type	96 alphanumeric, 13 kinds of international character set, 1 kind of user define character
Character size	9.0mm x 5.25mm
Power supply	9 - 35VDC
Power consumption	3 - 6 W
Operating Temperature	5 - 45
Operating Humidity	30%-85%
Storage Temperature	-10 - 55
Storage Humidity	10%-85%
Data transmission	Serial
Synchronization	Asynchronous
Handshaking	DTR / DSR
Signal level	MARK = -3 to -15 V (logic "1"), SPACE = +3 to +15 V (logic "0")
Baud rates	4800,9600,19200,38400 bps
Parity	None, even
Bit length	8 bits
Stop bits	1 or more

If you choose VFD type, adjust the jumper setting of the COM port to make it activate +12V. Please refer to the last two pages of our POS600 Installation Guide.

2.2 LCD type(V1.1)

ITEM	DESCRIPTIONS
Display method	Liquid crystal display
LCD type	STN Blue mode
Backlight mode	CCFL backlight
Brightness	100 cd/m ²
Display color	Blue (back color) and, White (character color)
Number of character	30 columns x 4 lines (or double high is 2 lines) alphanumeric 15 columns x 4 lines (or double high is 2 lines) Chinese character
Character font	8 x 16 dot matrix by alphanumeric, 16 x 16 dotmatrix by Chinese characters
Character Type	96 alphanumeric, 13000 Traditional Chinese characters by Big 5 code
	96 alphanumeric, 8000 Simplified Chinese characters by GB code
	96 alphanumeric, 7000 Japanese characters
	96 alphanumeric, 8000 Korean characters
Character size	8.47mm x 4.24mm(16x8 dot matrix) 8.47mm x 8.47mm(16x16 dot matrix) 16.94mm x 8.47mm(32x16 dot matrix)
Power supply For stand alone type	9-33 VDC
Power consumption For stand alone LCD type	3 W - 6 W (Standby : 1 W)
MTBF	15000-20000 hours (life time)
Support dimensions	Long support : 22 mm, Short support : 9 mm
Operating temperature	0 - 50
Operating Humidity	30%-85%
Storage Temperature	-20 - 55
Storage Humidity	10%-85%

3. Connector Pin Assignment

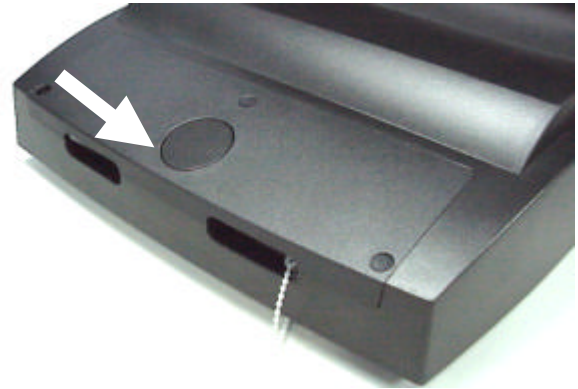


Pin	Assignment	Pin	Assignment	Pin	Assignment
1	+12V	4	DSR	7	NC
2	RXD	5	GND	8	DSR
3	TXD	6	DSR	9	NC

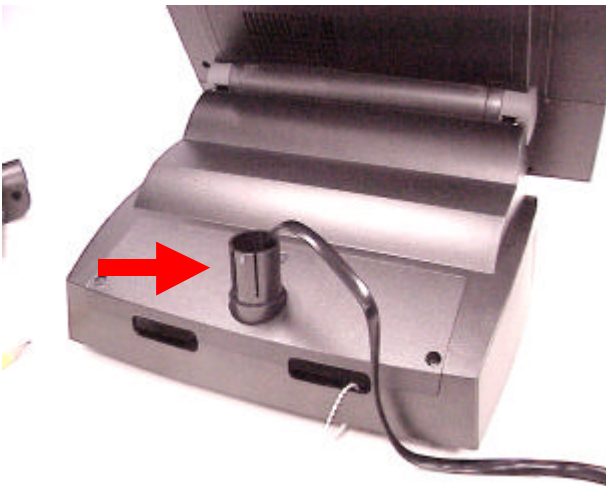
4. Install Customer Display



a. Connect the RS232 cable onto any of the COM ports.



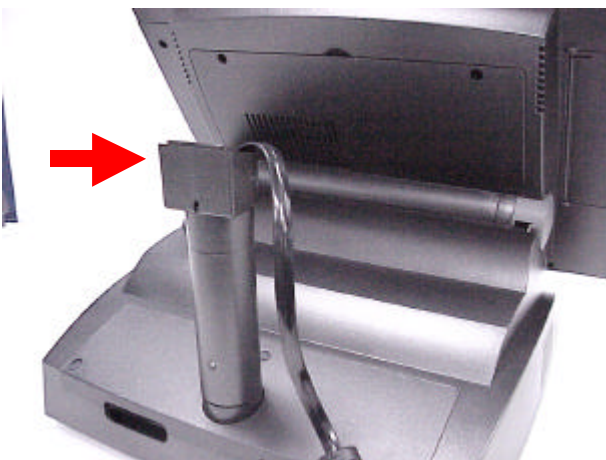
b. Remove the pole display cover from pole display base by fingers.



c. Install the bottom of the pole display onto POS system base unit.



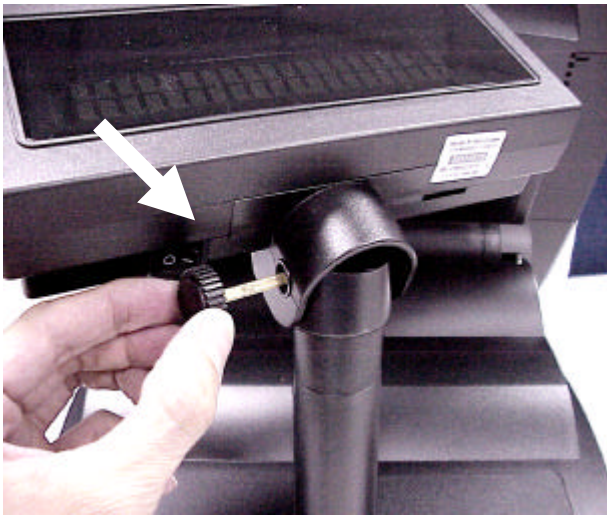
d. Install the 9cm pole support onto the cover kit.



e. Install the top of the pole display onto the support pole.



f. Insert the other end of the RS232 cable into the RJ45 connector of the customer display.

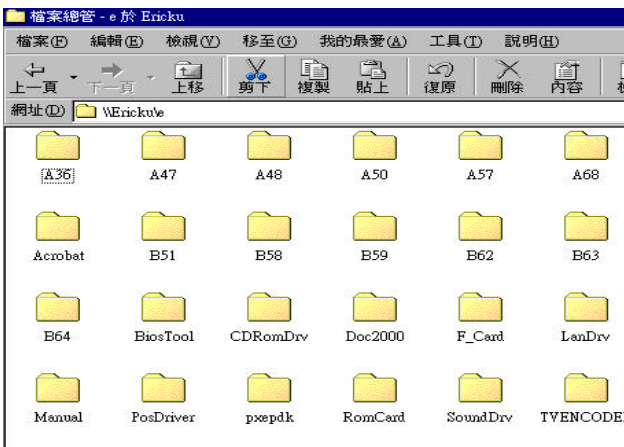


g. Insert the screw into the hole of the connection kit. Notice the direction of insertion.



h. Fasten the cap at the other end of the screw.

5. Test Program



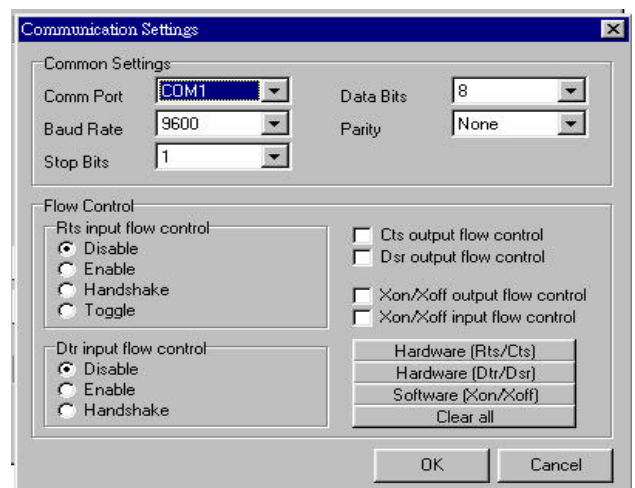
a. Select "POS Driver" in the Driver Bank CD we provide.



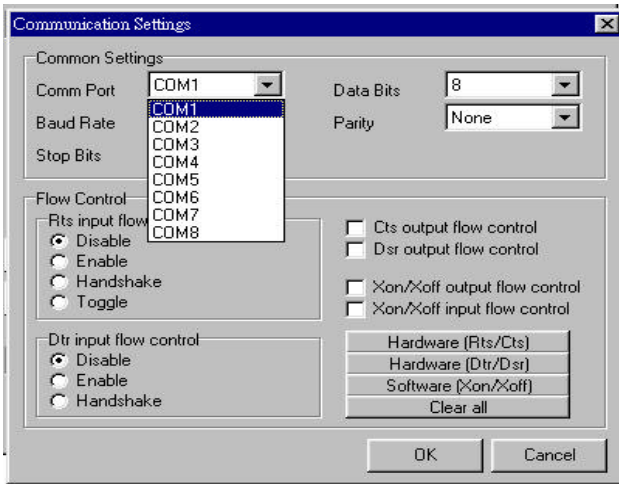
b. Select "VFD."



c. Select "Demo.exe."



e. Pull down Comm Post in the "Communication Settings" window.



f. Choose the COM port your Customer Display is connected with RS232 cable.



g. For testing, type any words and click "Write" button, then you will see those words on the customer display.